



Panorama of Edo (now Tokyo) showing daimyo residences, Japan by Felix Beato via Wikipedia

1. Title:

# Network Studies 2011

2. Contact Person

**Bettina Gramlich-Oka** (\*4065; gramlich-oka@sophia.ac.jp)

3. Other members:

Faculty members: **David Wank**, **Shion Kono**, **Mathew Thompson**, **Caroline Hirasawa**

Further members of this research group include scholars from Tokyo and vicinity, such as **Linda Grove**, **Thomas Harper**, **Kate Nakai**, **Gaye G. Rowley** and **Fumiko Umezawa**.

Also many post-docs and PhD students join on a regular basis.

4. Goal and Purpose:

The ICC unit, which was initiated in 2010 (please see [Network studies HP](#)), analyzes cross-cultural networks. In a highly connected world, personal, political, or economic networks are often assumed (with suspicion) but seldom studied cross-culturally. The unit collaboratively comes up with a set of theories and models for prosopography and network analysis that consider groups as elements in society. The focus is not on the individual but on the individual within the context of family, work, and leisure. In other words, the research unit highlights the importance of the places in which an individual is active and the function he performs within society.

The research project is an ongoing one with various time periods and regions as its concentration.

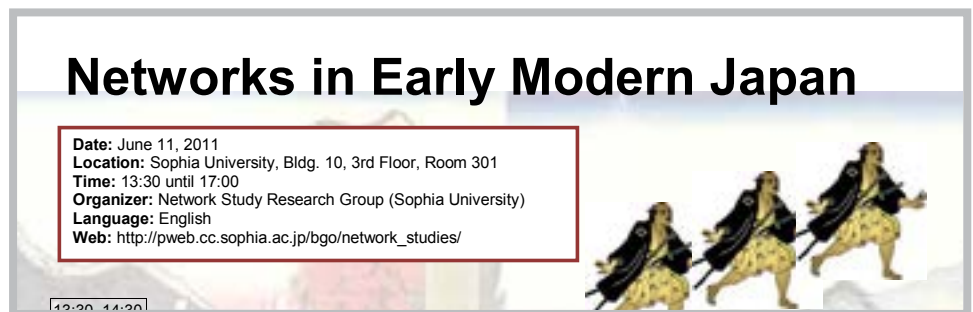
As a start-up project we discuss the available theories, methods, and models for our network analysis. This knowledge serves as our foundation for our first focus, on the early modern period in Japan, an understudied era in regards to network analysis. The project “Intellectual Networks in Early Modern Japan and Beyond” focuses on various groups with an integrative analysis of a wide variety of writings. The conclusions will enhance our understanding of both the ideological realm, which informed policies ordered by the shogunate and the domains of the regional rulers (*daimyo*), and the practical realm of how these networks operated. The results will emphasize the traffic of ideas and endeavors among people from various backgrounds and stations in life beyond narrow geographic borders.

## 5. Activities in Past and Future:

Since launching our research group in May 2010 the research unit has been active in various forms: (Please refer to [our HP](#) for details):

- a. The unit meets monthly as a reading group, in which primary sources are read.
- b. In addition the unit hosted three workshops on Network studies, which were video recorded and are accessible on the [Sophia Homepage](#).

- [Workshop 3](#). June 11, 2011



d. With the help of a research assistant the prosopographical database is continuously fed.

e. One journal article has been published as a result and the financial support from the ICC in February. Bettina Gramlich-Oka, “Neo-Confucianism reconsidered: Family Rituals in the Rai Household,” *US-Japan Women’s Journal*, vol. 39, 2010.

f. And the project was represented at the European Association for Japanese Studies, Tallinn, Estonia in August 2011 with a successful panel.

## **6. Plans and goals:**

- a. The unit will continue the monthly meetings
- b. Further workshops are in planning
- c. The database is now up on a server and will be available soon for the public.
- f. Bettina Gramlich-Oka will apply for a research grant from JSPS in the fall 2011.



Edo map 江戸切絵図: Picture map of Aoyama and Shibuya 青山渋谷絵図, the national Diet Library 国立国会図書館.via Wikimedia Commons

1. Title:

# Network Studies 2015

2. Contact Person

**Bettina Gramlich-Oka** (\*4065; gramlich-oka@sophia.ac.jp)

3. Other members:

Faculty members: **Mathew Thompson, Christian Hess, David Slater, David Wank.**

Further members of this research group include scholars from Tokyo and vicinity, such as **Linda Grove, Thomas Harper, Kate Nakai, Gaye G. Rowley** and **Fumiko Umezawa.**

4. Goal and Purpose:

The ICC unit, which was initiated in 2010 (please see [Network studies HP](#)), analyzes cross-cultural networks. As a start-up project we discuss the available theories, methods, and models for our network analysis. This knowledge serves as our foundation for our first focus, on the early modern period in Japan, an understudied era in regards to network analysis. The project “Intellectual Networks in Early Modern Japan and Beyond” focuses on various groups with an integrative analysis of a wide variety of writings. The conclusions will enhance our understanding of both the political realm, which informed policies ordered by the shogunate and the domains of the regional rulers (daimyo), and the practical realm of how these networks operated. The results